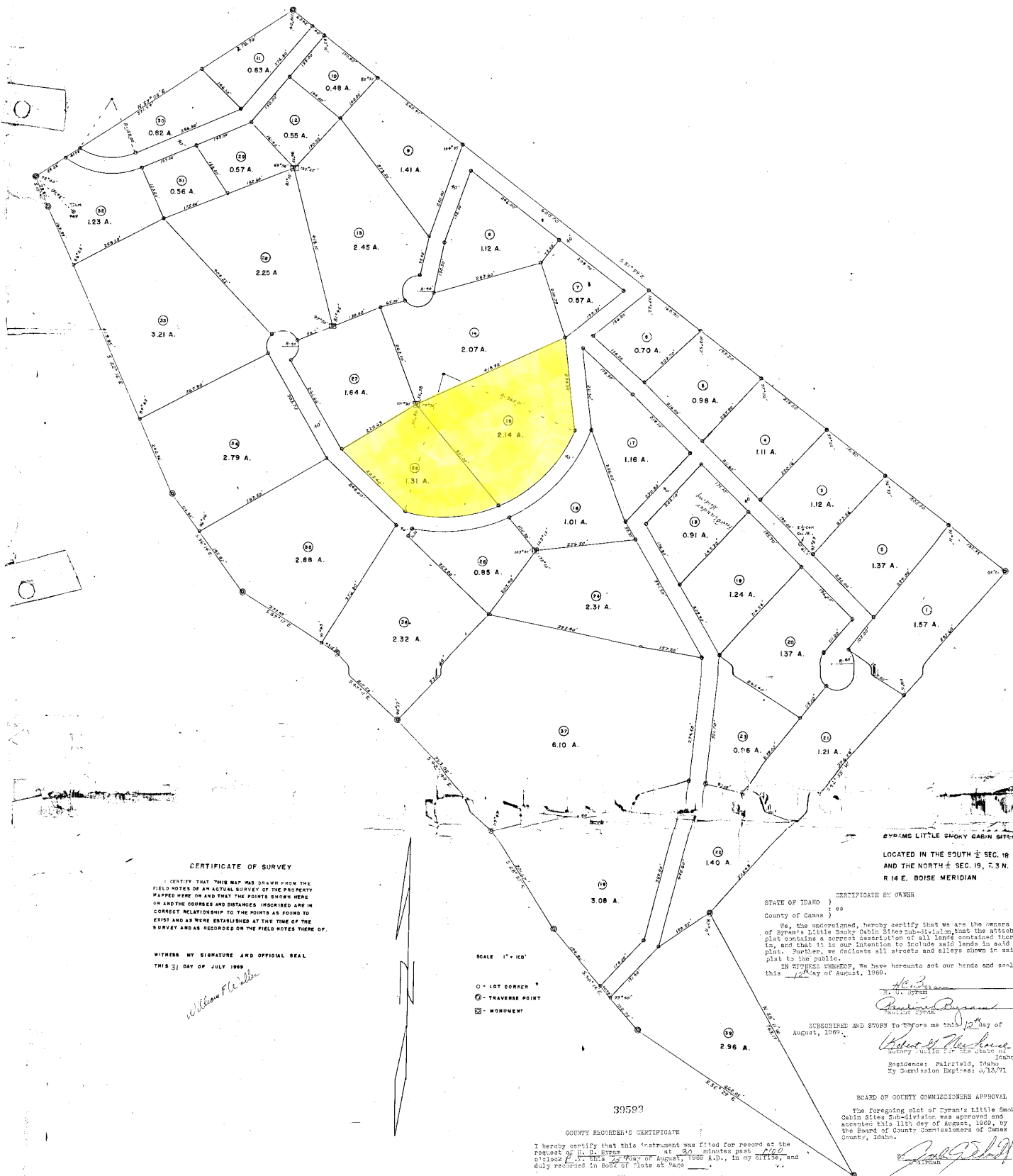


BYRAMS LITTLE SMOKY CABIN SITES



CERTIFICATE OF SURVEY

I CERTIFY THAT THIS MAP WAS DRAWN FROM THE FIELD NOTES ON AN ACTUAL SURVEY OF THE PROPERTY MAPPED HERE ON AND THAT THE POINTS SHOWN HERE ON AND THE COURSES AND DISTANCES, INSCRIBED ARE IN CORRECT RELATIONSHIP TO THE POINTS AS FOUND TO EXIST AND AS WERE ESTABLISHED AT THE TIME OF THE SURVEY AND AS WERE RECORDED ON THE FIELD NOTES THERE OF.

WITNESS MY SIGNATURE AND OFFICIAL SEAL
THIS 31 DAY OF JULY 1969

William F. C. Williams

SCALE 1" = 100'

- - LOT CORNER
- ⊙ - TRAVERSE POINT
- ⊠ - MONUMENT

39593

COUNTY RECORDER'S CERTIFICATE

I hereby certify that this instrument was filed for record at the request of H. G. Byram at 2:17 minutes past 2:00 o'clock P.M. THIS 22 DAY of August, 1969 A.D., in my Office, and duly recorded in Book of Plats at page

Instrument No. 39593
Fee \$ 5.00

Catella Knight
County Recorder
Boise, Idaho

BYRAMS LITTLE SMOKY CABIN SITES
LOCATED IN THE SOUTH 1/2 SEC. 18
AND THE NORTH 1/2 SEC. 19, T. 3 N.
R. 14 E. BOISE MERIDIAN

CERTIFICATE BY OWNER
STATE OF IDAHO) ss
County of Camas) ss

We, the undersigned, hereby certify that we are the owners of Byram's Little Smoky Cabin Sites Sub-division, that the attached plat contains a correct description of all lands contained therein, and that it is our intention to include said lands in said plat. Further, we disclose all streets and alleys shown in said plat to the public.

IN WITNESS WHEREOF, We have hereunto set our hands and seals this 12 day of August, 1969.

H. G. Byram
H. G. Byram
Residence: Fairfield, Idaho

SUBSCRIBED AND SWORN to before me this 10 day of August, 1969.

Robert W. Newhouse
Robert W. Newhouse
Residence: Fairfield, Idaho
By Commission Expires: 2/13/71

BOARD OF COUNTY COMMISSIONERS APPROVAL

The foregoing plat of Byram's Little Smoky Cabin Sites Sub-division was approved and accepted this 11th day of August, 1969, by the Board of County Commissioners of Camas County, Idaho.

John G. Smith
Chairman